



Direct Entry Master of Science in Nursing
A Community Collaborative Project

Dr. Melissa Vandever
Program Director
Sonoma State University
Northern California

A decorative header with a blue wavy graphic background. The word "Partners" is written in a black serif font on the left side of the graphic.

Partners

- Kaiser Permanente, Santa Rosa
- Sutter Medical Center of Santa Rosa
- Queen of the Valley, St. Joseph Hospital
Systems, Napa



Three Points

Direct Entry Student

- The nature of the student

- Learning needs of the student

Collaborative Teaching Model

- Partners provide funding

- One to one staff/student for clinical education

Curriculum

- Simultaneous pre-licensure and master's level courses

- Online Delivery

Direct Entry Student

- Varied backgrounds contribute to nursing and role of CNL
- Motivated
- Self-directed
- Naïve/ beginners
- Fear of failure/not making A's
- Interested in everything
- Want all they can get
- Demanding/challenging



Partnership

- Hospital Partners provided:
 - Startup Funds
 - Faculty for development of curriculum and clinical
 - Staff for one to one mentor/clinical teacher
 - All embrace – “sfumato” - a willingness to embrace ambiguity, paradox and uncertainty

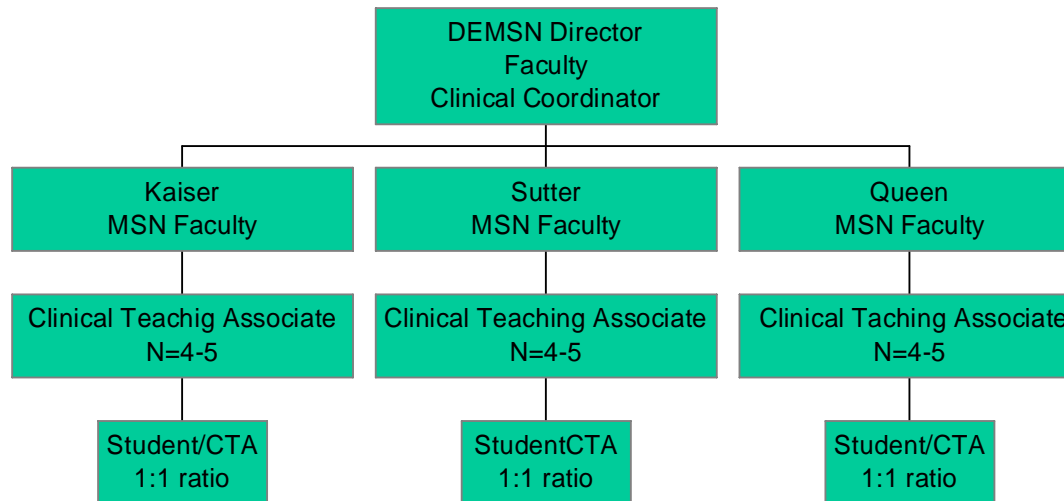


Partnership

- Collaborative model recognizes:
 - Benefits to combining the goals of academic education with partner needs and regulations
 - Significant role health institutions play in education
 - Need for efficient, innovative models for educating nurses
 - Students “ours” = both university and partner

Collaborative Education Model

Clinical Education Model

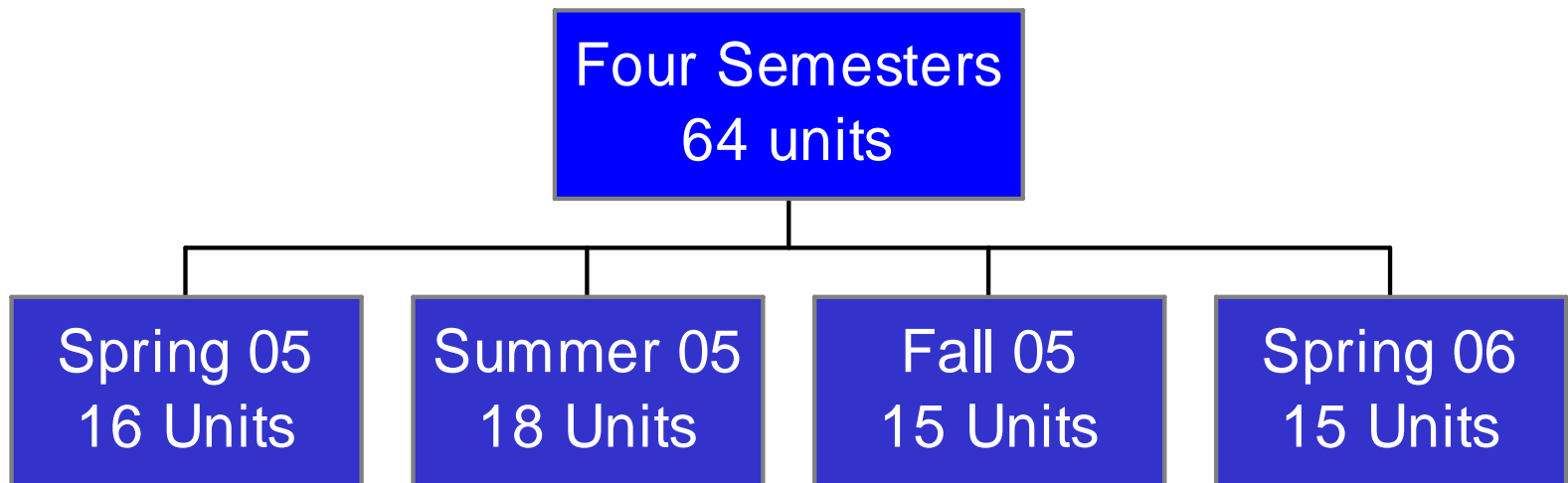




Partner Benefits

- Create innovative change in education
- Improve patient care
- Facilitate recruitment and retention
- Facilitate efficient institution orientation
- Participate in nationwide dialogue regarding developing CNL role.
- Work together in a new relationship that captures university and partner mission/goals/policy/regulations

Curriculum





Online Hybrid

- WebCT – Template coordinates delivery
- Course content coordinated to include overlap and avoid unnecessary redundancy
- Skills Days – in person
- Retreat Days – in person
- Clinical rotation – all varied and relative to CTA availability